

# RNAV (GNSS) RWY 30

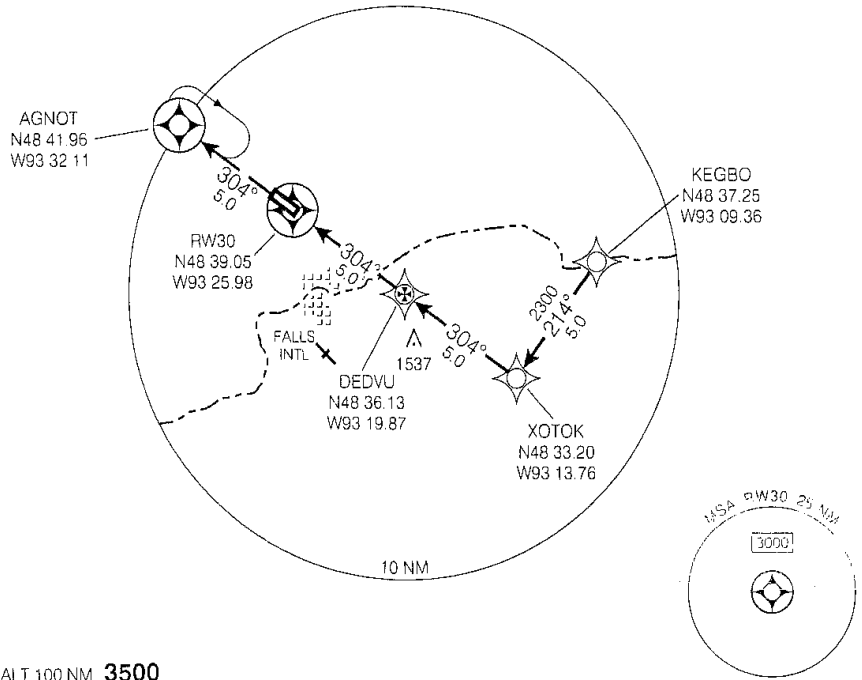
FORT FRANCES ON

AWOS FALLS INTL 120.0	ARR/DEP MINNEAPOLIS CENTRE 120.9	UNICOM 122.8 (ATF 5 NM) O/T TFC 122.8	ELEV 1125
--------------------------	----------------------------------------	---------------------------------------------	-----------

Use Falls Intl  
altimeter setting

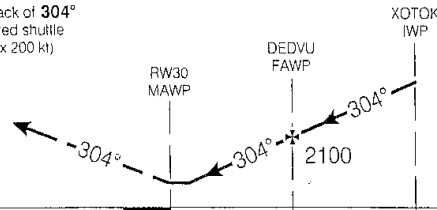
CYAG

Verify runway  
unobstructed

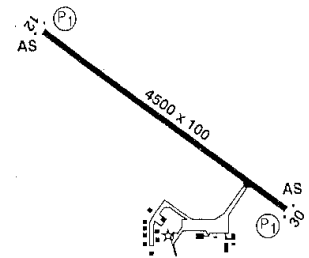


SAFE ALT 100 NM 3500

MISSED APPROACH  
Climb to 3000 on track of 304°  
to AGNOT. As required shuttle  
climb at AGNOT (max 200 kt)



ARCAL 122.7 (K)



CATEGORY	A	B	C	D
LNAV / VNAV	NOT AUTHORIZED			
LNAV	1620	(501)	1 1/2	
CIRCLING	1640	(515)	1 1/2	1760 (635) 2

Knots	70	90	110	130	150
Min Sec					

# RNAV (GNSS) RWY 30

FORT FRANCES ON

483915N 932623W

VAR 1°E (2003)

Source of Canadian Civil Aeronautical Information: NAV CANADA All rights reserved